

evoluzione cyclesports

installation instructions

license plate relocater for ducati 1098

part number 90028

©2007 by evoluzione.net, inc.

this **evoluzione cyclesports license plate relocater** is designed to be a lightweight, simple addition to help clean up the tail end look on the ducati 1098 superbikes. the relocater bracket is made from 5052-h32 aluminium and is anodized for long life. **note: due to the repositioning of the turn signals, this kit may not be legal for street use - please check local laws first.**

introduction

the **evoluzione cyclesports license plate relocater** is easy to install by carefully following the instructions. read all instructions first to familiarize yourself with the parts and procedures.

installation

caution: It is suggested that the bike be allowed to cool off for a few hours to avoid burns from hot exhaust and parts.

step 1. using a 4mm allen wrench, undo the three bolts holding the number plate holder cover and

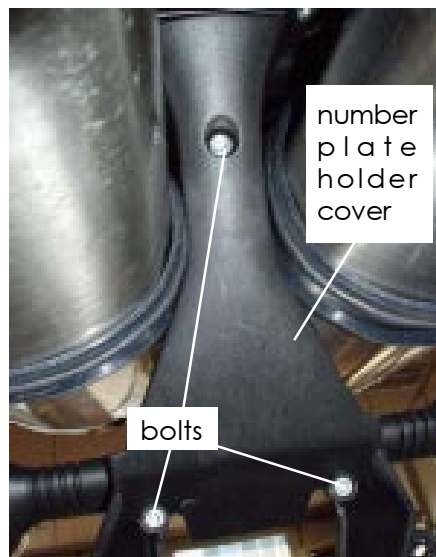


photo one

remove it (please see photo one).

step 2. disconnect the rear turn signal connectors and the license plate light connector from the main wiring loom and remove the number plate holder assembly.

step 3. using a 5mm allen wrench, undo the two bolts securing the number plate holder to the frame (please see photo two) and re-

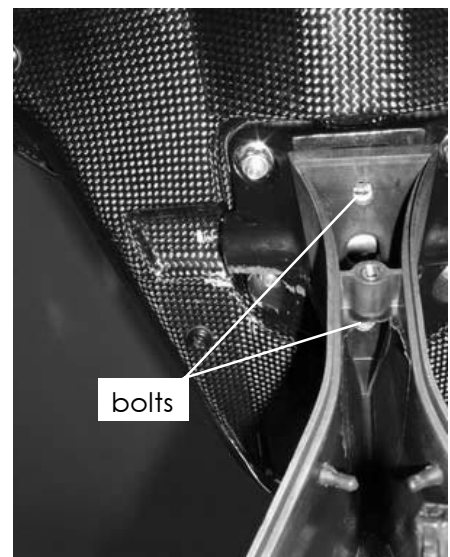


photo two

move it.

step 4. using a 14mm wrench, remove both turnsignals from the number plate holder assembly (mark them left and right for reassembly). using a t-10 torx driver, remove the license plate light. also remove the license plate from the number plate holder assembly.

step 5. apply a small amount of

38580 celine cove, suite "b"
murrieta, california 92562

phone: 951.639.0951
fax: 951.639.3022

june 2007, revision 01

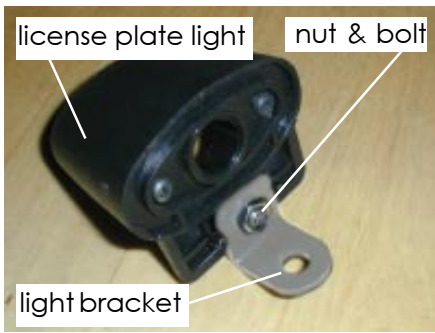


photo three

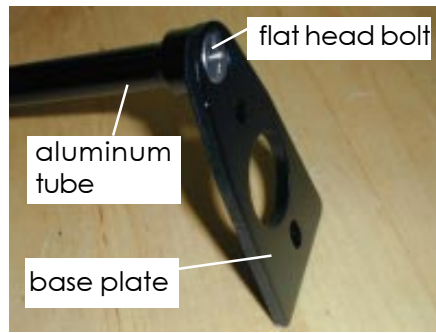


photo four

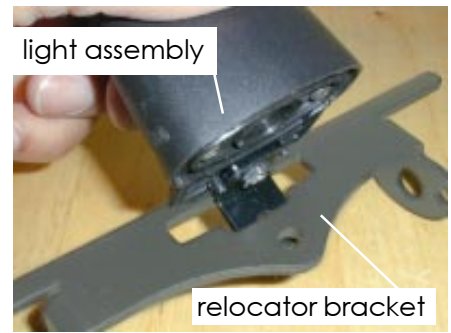


photo five

blue threadlocker to the supplied m5 bolt. install the license plate light onto the supplied light bracket using the supplied m5 bolt and nut (please see photo three).

step 6. install the supplied flat head bolt with a small amount of blue threadlocker through the counter-sunk hole on the base plate then screw it into the supplied aluminum tube and tighten (please see photo four).

step 7. install the light assembly through the top of the relocator bracket (please see photo five).

step 8. apply a small amount of blue threadlocker to the supplied pan head bolt and install through the supplied washer then through the light bracket and the license plate bracket and screw it into the other side of the aluminum tube and tighten (see photo six).

step 9. reattach the turnsignals, (noting left and right), by feeding the turnsignal wires through the larger of the two holes on the sides of the bracket. reinstall with original tube nuts.

step 10. secure the assembly using the two stock bolts removed earlier.

step 11. slip one of the supplied shrink tubes over each connector. route and reconnect the wires from the turnsignals and license plate light. turn the key to "on" and check that the turnsignals and license plate light function correctly. heat shrink tube to seal connections.

step 12. using the supplied tie wraps, neatly bundle the wires. reattach the license plate to the relocator bracket.

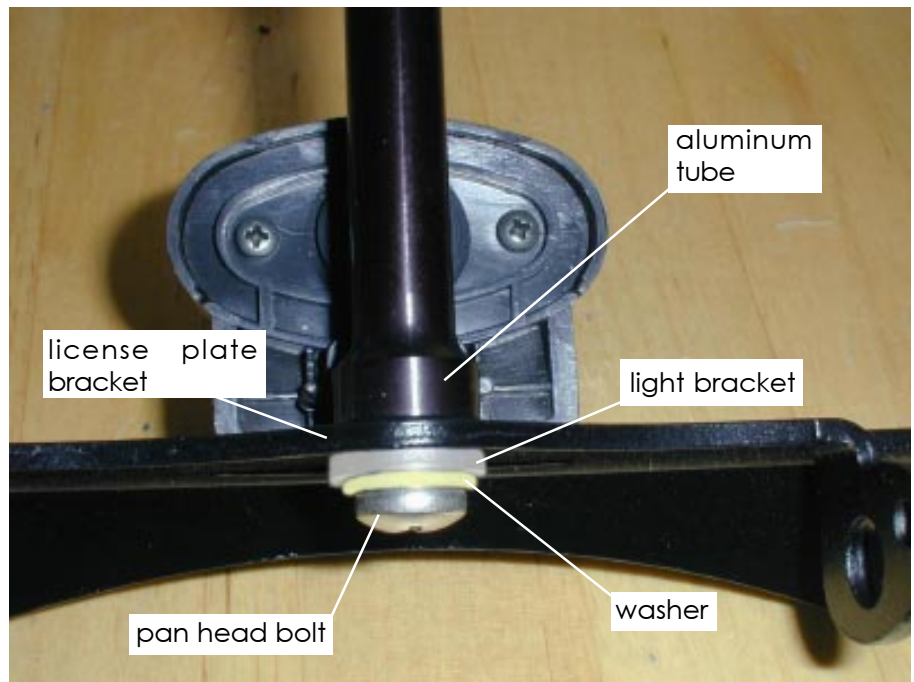


photo six

parts list

relocator bracket
 aluminum base plate
 aluminum tube
 light bracket
 1/4-20x1/2 flat head bolt
 washer
 1/4-20x3/4 pan head bolt
 tie wraps (2)
 m5 x 10mm bolt
 m5 jam nut
 3/8" shrink tube (3)

tools required

4mm & 5mm allen wrench
 blue treadlocker
 t10 torx driver
 8mm & 14mm wrench
 heat gun